

ENERGY DIVISION



MOBILE SUBSTATIONS

MOBILE SUBSTATIONS

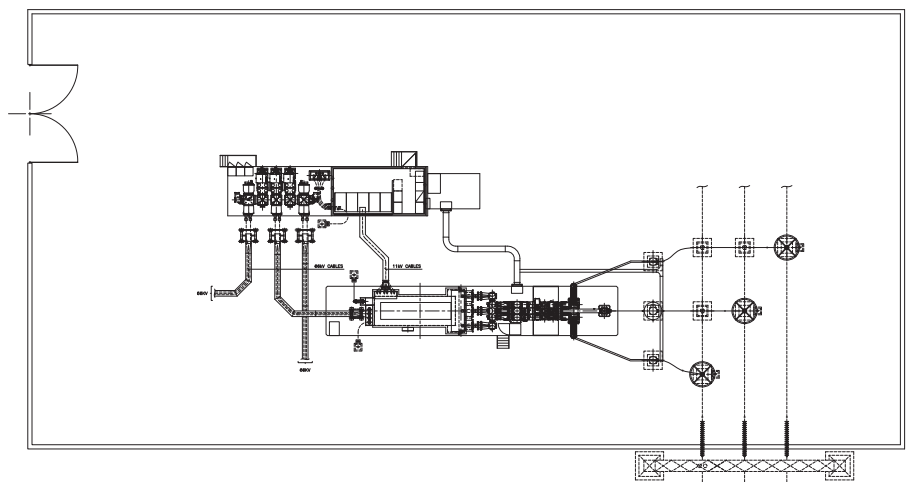
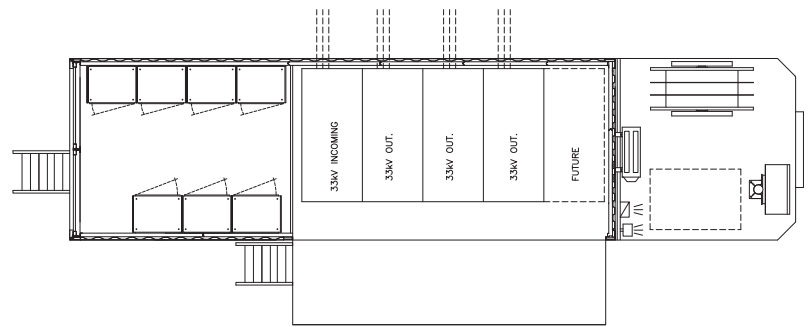
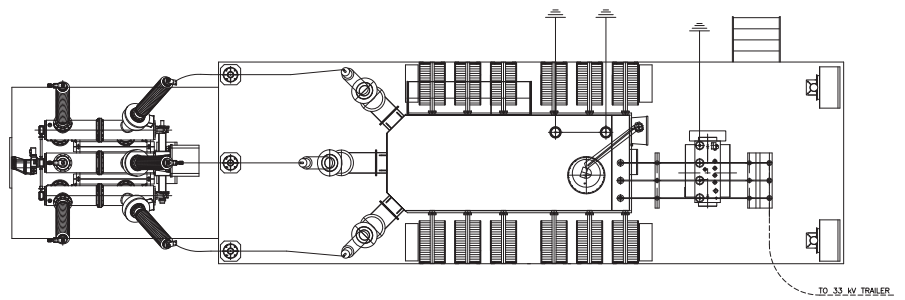
Mont-Ele has been working in the sectors of energy, transport, industry, services and research since 1972, carrying out, with clients' trust and satisfaction, electromechanical, plant, system, civil and maintenance engineering for main fixed and mobile SSs for the Italian and International markets, classifying Mont-Ele as one of the leader companies in fixed and mobile substations supply.

The high level of qualification and the experiences of Mont-Ele in the engineering sector, assures high quality of mobile SS, meeting all applicable international standards.



The Energy Division is the branch of the Mont-Ele company specialised in engineering, assembling, and sales of the electrical equipment for energy transmission and distribution SS, according to customer requests and needs.

The Distribution mobile substations consist of a metal enclosure, or trailer, containing all the substation-related elements, including HV circuit breaker, Main Transformer, the Medium Voltage cubicles, auxiliary service transformer, low voltage distribution board, battery charger and other auxiliary devices, entirely factory built and tested according to the IEC standards (International Electrotechnical Commission), which can be installed in a rapid manner. The configuration can be engineered according to customer needs, technical specifications and clients requests.



The mobile SS associated to their reliability, compactness, mobility and high quality, ensure a good solution for:

- **Emergency power unit**, in case of equipment failure
- **Temporary power unit**, in case of emergency situations, for the supply of vital energy
- **Maintenance power unit**, in case of maintenance or repair activities
- **Construction power units**, in case of modernization of a SS
- **Stand-by units** for peak-load periods
- **Source of power** in isolated areas
- **Turn-key** delivery of SS with the minimum time and with the most rigorous standards of quality and shorter commissioning times.



The customer is supported from the offer phase to the construction.

These substations are produced, assembled, wired and tested entirely in factory, ensuring uniform quality and reducing any on-site construction and assembly processes.

- High mobility
- **Flexibility**
- Low capital investment
- Short delivery time
- **Rapid and easy integration into the network**
- Easy transport (no need of special permits or escort vehicles)
- Reduced civil works
- Easy installation - Plug & play philosophy
- **Customised configuration**
- High operating reliability
- Extensible from both sides
- Climate resistance
- **Simple Maintenance and inspection**
- Minimum space requirement
- Personnel protection
- Great reliability of supply
- Great electrical and mechanical reserves
- Door-interlocking feature

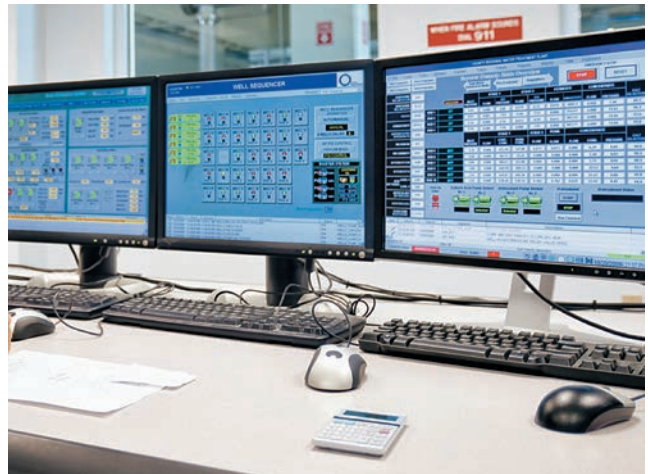
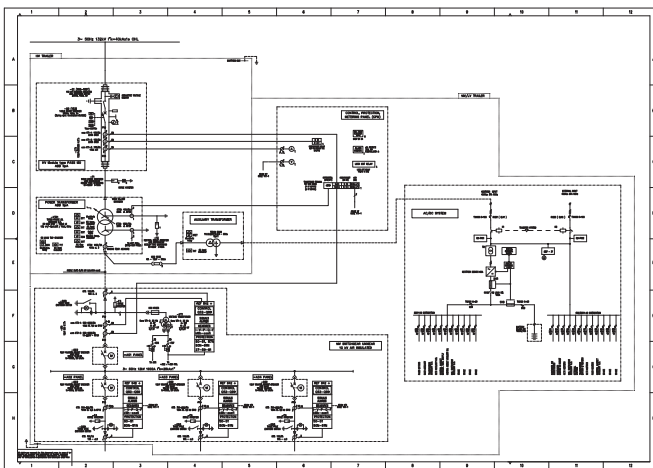
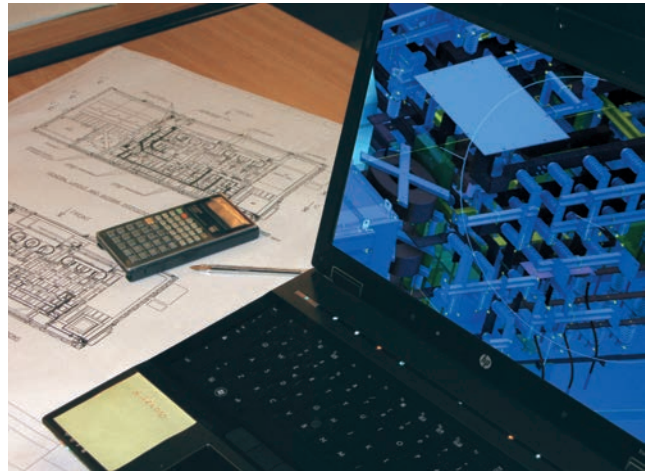


We use the most updated technologies to design a compact and lightweight mobile substation contributing to the mobility of the SS, meeting the local road transport regulations, increasing the manoeuvrability and adapting the SS for transport and service situations.

Mont-Ele provides the clients with complete products and solutions starting from engineering (basic, detailed, as-built), to supply optimized solutions, technical documents, project management, procurement of Medium Voltage to Low Voltage cubicles, automation and SCADA system, assembling, tests and commissioning.

Fast and efficient deployment, anywhere, anytime!

By using a prefabricated shelter or trailer solution, the layout of the substation can be determined before the site is selected.



Our engineers and project managers, thanks to their high qualified competences, working closely together with the clients' experts, will ensure the final solution will be supplied according to your specifications.

We are able to design and supply different kind of SS, according to your requests and your needs:

	Nominal Voltages*	Transformer capacity*	Nominal frequency*
Metalclad	Up to 36kV	Up to 40MVA	50 or 60Hz
Open air	Up to 220kV	Up to 40MVA	50 or 60Hz

* The above indicated ratings are indicative and the performance characteristics can be defined for each individual case.

The accurate design makes its installation easy and fast, allowing it to be used in very confined spaces.

The civil works are confined to the foundations for the container, preassembled and tested in factory, **assuring a high level of quality and reliability.**

The SS, thanks to its configuration, can be moved, so in case of need, the SS can be relocated easily.

Thanks to their low weight and their compact size, the transportable SS are very versatile and easy to be transported all over the world.

In case of trailer SS, the pneumatic system of the lorry transporting the trailer unloads the SS and after opening the MV connection area, it is just necessary to connect the power cable.



Do you want more information? Do you need a customized solution?

Just call us or send us your request by fax or e-mail. We will be very glad to help you.

For inquiries purposes, just send us:

- single line diagram,
- nominal ratings,
- insulation levels,
- maximum dimensions and weights.

We will answer you ASAP with our best quotation and solution!

“Quick” to realize your needs!

We can supply you the solution you are looking for!

Mont-Ele is a leading company for engineering and construction of turn-key power transformer substations (fixed and mobile) having an experience, since 1972, of more than 1800 Substations all over the world.

Learn more about Mont-Ele products and services at: www.mont-ele.it

1972...



...today

In the implementation of the National and Community legislations in matter of quality, safety at work and environmental policies, with the purpose to guarantee the maximum quality for the Customer and the rigorous respect of the environment, Mont-Ele has introduced from years in its organizational structure, an integrated System for Management of **Quality, Environment and Safety** certified by recognized third Company **TÜV**.

In particular, Mont-Ele has acquired the Quality Certificate for establishing and applying the Quality Management System according to the **UNI EN ISO 9001:2008** standard, integrated with the Environmental Certificate for establishing and applying an Environmental Management System according to the **UNI EN ISO 14001:2004** standard and the Safety Certificate for establishing and applying a Safety Management System according to **BS OHSAS 18001:2007**, for all steps, from the customer inquiry through the commissioning and servicing.

All the substations are always fully routine tested. Special tests may be performed on specific request.

CERTIFICATO
 Nr 50 100 8676
 Si attesta che / This is to certify that
 IL SISTEMA DI GESTIONE SICUREZZA E SALUTE DEI LAVORATORI DI
 THE OCCUPATIONAL HEALTH AND SAFETY MANAGEMENT
 SYSTEM OF
MONT-ELE S.r.l.
 SEDE LEGALE ed UFFICI: VIA S. CHIARA 12 I-20034 GIUSSANO (MI)
 SEDE OPERATIVA: VIA CATALANI 71 I-20034 GIUSSANO (MI)
 È CONFORME AI REQUISITI DELLA NORMA
 HAS BEEN FOUND TO COMPLY WITH THE REQUIREMENTS OF
BS OHSAS 18001:2007
 Questo certificato è valido per il seguente campo di applicazione
 This certifi
 Progettazione, elettrici, in automazi sottostazioni
 Design, prc electrical su Technical con and power un
 Certificazione rilasc
 Data di emissione: 2009-05

CERTIFICATO
 Nr 50 100 8530
 Si attesta che / This is to certify that
 IL SISTEMA QUALITÀ DI
 THE QUALITY SYSTEM OF
MONT-ELE S.r.l.
 VIA SANTA CHIARA 12 I-20034 GIUSSANO (MI)
 È CONFORME AI REQUISITI DELLA NORMA
 HAS BEEN FOUND TO COMPLY WITH THE REQUIREMENTS OF
UNI EN ISO 9001:2008
 Questo certificato è valido per il seguente campo di applicazione
 This certificate is valid for the following product or service range
 Progettazione, costruzione, fornitura ed installazione di quadri elettrici, impianti e sistemi elettrici di strumentazione ed automazione. Consulenza tecnica ed ingegneria di sottostazioni elettriche, centrali elettriche, impianti e sistemi elettrici, di strumentazione ed automazione (EA 28, 19, 34)
 Design, construction, supply and installation of panels, plants and electrical units, instrument, automation systems. Technical consulting and engineering of electrical substations and power units, electrical plants and instrument automation systems (EA 28, 19, 34)
 Sistema di gestione per la qualità conforme alla Norma ISO 9001:2000 valutato secondo le prescrizioni del documento SINCERT RT-05.
 La presente certificazione si intende offerta agli aspetti gestionali dell'impresa nel suo complesso ed è utilizzabile ai fini della qualificazione delle imprese di costruzione ai sensi dell'articolo 8 della legge 11 febbraio 1994 N. 109 e successive modificazioni e del D.P.R. 29 gennaio 2000 N. 34. Per informazioni puntuali e aggiornate circa eventuali variazioni intervenute nello stato della certificazione di cui al presente certificato, si prega di contattare il n° telefonico 02 241301 o indicarlo e-mail: lus.m@tue.it
 Data di emissione / Issue date: 2009-03-20
 Data di scadenza / Expiry date: 2009-06-23
 Per l'Organismo di Certificazione For the Certification Body TÜV Italia S.r.l.
SINCERT
 Andrea Vivi
 Amministratore Delegato - CEO

CERTIFICATO
 Nr 50 100 8677
 Si attesta che / This is to certify that
 IL SISTEMA DI GESTIONE AMBIENTALE DI
 THE ENVIRONMENTAL MANAGEMENT SYSTEM OF
MONT-ELE S.r.l.
 SEDE LEGALE ed UFFICI: VIA S. CHIARA 12 I-20034 GIUSSANO (MI)
 SEDE OPERATIVA: VIA CATALANI 71 I-20034 GIUSSANO (MI)
 È CONFORME AI REQUISITI DELLA NORMA
 HAS BEEN FOUND TO COMPLY WITH THE REQUIREMENTS OF
UNI EN ISO 14001:2004
 Questo certificato è valido per il seguente campo di applicazione
 This certificate is valid for the following product or service range
 Progettazione, costruzione, installazione, messa in servizio ed assistenza post vendita di quadri elettrici, di impianti e sistemi elettrici, di strumentazione e automazione, mediante operazioni di montaggio, cablaggio, lavorazione meccanica e collaudo. Consulenza tecnica ed ingegneria di sottostazioni elettriche, di impianti e sistemi elettrici, di centrali elettriche, di strumentazione e automazione (EA 19, 28b)
 Design, construction, installation, commissioning and service of electrical panels, systems and plants, instrumentations and automations by activities of assembling, wiring, machining and testing. Technical consulting and engineering of electrical substations and power units, electrical units and plants, instruments automation systems (EA 19, 28b)
 Certificazione rilasciata in conformità al Regolamento Tecnico SINCERT RT-09
 Data di emissione / Issue date: 2009-05-26
 Data di scadenza / Expiry date: 2012-05-26
 Per l'Organismo di Certificazione For the Certification Body TÜV Italia S.r.l.
SINCERT
 Andrea Vivi
 Amministratore Delegato - CEO
 La validità del presente certificato è subordinata a sorveglianza periodica a 12 mesi e al riesame completo del sistema di gestione aziendale con periodicità triennale
 The validity of the present certificate depends on the annual surveillance every 12 months and on the complete review of company's management system after three-years

**MONT-ELE SRL**

Via Santa Chiara, 12 - 20833 Giussano (MB) - ITALY
Phone +39 0362.852291 - Fax +39 0362.851555
mont-ele@mont-ele.it - www.mont-ele.it

The information in this document contains general description of the technical options which do not always have to be present in individual cases. Therefore, the required performance characteristics must be defined in individual cases during conclusion of the contract.

In view of the constant evolution in standards and design, and due to the continuous development, the characteristics of the elements contained in this catalogue are subject to change without prior notification.

These characteristics, as well as the availability of components, are subject to confirmation by Mont-Ele's Technical-Sales Department. Not valid as a contractual item.

All right reserved. No part of this publication may be reproduced without the permission of Mont-Ele srl. Mont-Ele is a registered trademark.

code: MOBSS-01**CONTACTS**